

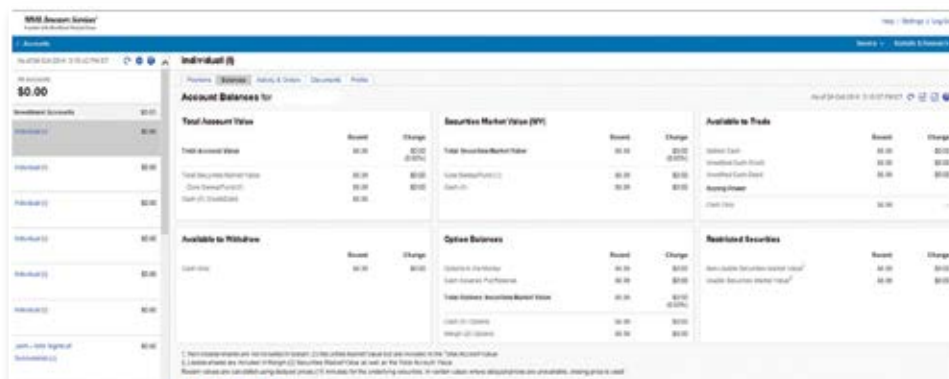


ACCESS YOUR ACCOUNT INFORMATION

Once your registration is complete, you may access your accounts, positions and balances online.

1. Log in to your account at www.wealthscapeinvestor.com/mmlis.
2. Select the account you wish to view from the list in the left-column.
3. Select the tabs at the top of the page to view your account holdings, activity updates and two years of transaction history.

You can customize the layout of your Account Positions screen to sort and filter the data you want to focus on.



Visit www.wealthscapeinvestor.com/mmlis to register for online access today!



This material does not constitute a recommendation to engage in or refrain from a particular course of action. The information within has not been tailored for any individual.

Use of the Wealthscape Investor Brokerage Mobile app requires an active Online Brokerage Account.

This information is as of June 30, 2017, is subject to change, and is revised periodically. Companies and trading symbols mentioned are provided for illustrative purposes only and should not be used or construed as an offer to sell, a solicitation of an offer to buy, or a recommendation for any security.

Third parties are independent companies not affiliated with National Financial. Screenshots shown are for illustrative purposes only.

The third-party trademarks and service marks appearing within are the property of their respective owners.

All other trademarks and service marks appearing herein are the property of FMR LLC or its affiliated companies.

National Financial Services LLC, Member NYSE, SIPC, 200 Seaport Boulevard, Boston, MA 02210.

MML Investors Services, LLC, 1295 State Street., Springfield, MA is a registered investment adviser. Investment advisory services are offered through Investment Adviser Representatives of MML Investors Services. For information about MML Investors Services, contact your Investment Adviser Representative to request Part 2A and 2B of Form ADV.

Securities, investment advisory and financial planning services are offered through qualified registered representatives of MML Investors Services, LLC., Member SIPC. (www.SIPC.org) Supervisory address: 5885 Meadows Parkway, Suite 850, Lake Oswego, OR 97035. Phone (503) 221-1211.

